

elbo controllli  **NIKKEN**

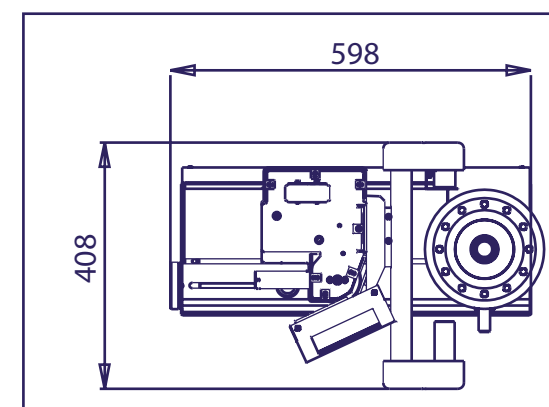
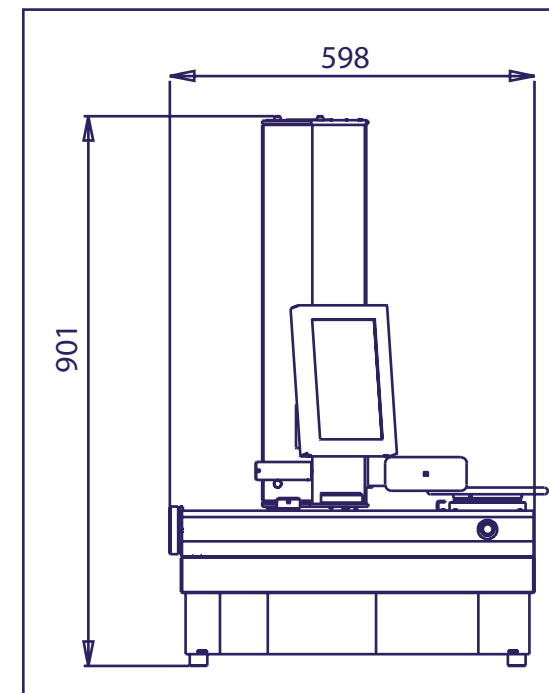
GLOBAL STRATEGIC PARTNERSHIP

**E346**

**E346**

## TECHNICAL FEATURES

- Measuring range: diameter max 360 mm (radius 180 mm); height max 460 mm
- Machine structure in electro-welded and detensioned steel
- Base and column made of natural granite: linearity max error 2  $\mu\text{m}/\text{Mt}$  certification with Taylor Hobson res.1  $\mu\text{m}/\text{Mt}$  electronic millesimal level
- ISO/BT/HSK/CAPTO... etc. interchangeable rotating spindle-holder (to be specified) max run-out error < 4  $\mu\text{m}$
- Double vault arc prismatic slideways: N°2 X axis slideways; N°1 Z axis slideway
- Double re-circulating ball bearing slides, lubricated for life (3) (preloaded slides/slideways: P/H class)
- Manual mechanical braking of the interchangeable spindle-holder rotation
- Costant load Archimedean spiral spring (as opposed a mass counter-balance system)
- Vision-system for tool measuring including:
  - TFT colour  $\varnothing$  110 x 200 mm image size
  - Magnifications 25X
  - C-MOS sensor-framed image area 4,8 x 4,8 mm
  - Cutting inspection
- Machine operator interface through:
  - TFT 9" colour Touch Screen
  - ELBO CONTROLLI firmware
  - Data storage on Flash memory
- Standard software:
  - 9 numerical machine origin management
  - 9 numerical tool tables management, each of them composed of 99 tools
  - Tool corrector specific storage of: T, Lx, Lz, insert radius
  - Td346 (Tool Data 346) to manage backup and restore functions, machine origins and tool tables. Connection to the PC with an USB port and electronic Bios upgrade
- Analog comparators to measure on the fix reticule
- Telecentric lens and LED illuminator
- Axes resolution: X = 1  $\mu\text{m}$ , Z = 1  $\mu\text{m}$
- Overall dimensions: L = 598mm, H = 901mm, D = 408mm
- Net weight: 77 kg



elbo controllli  **NIKKEN**

Distributed by

20821 MEDA (MB) - Italy - Via San Giorgio, 21  
**T.** +39 0362 342745 - **F.** +39 0362 342741  
[www.elbocontrolli.com](http://www.elbocontrolli.com) - [info@elbocontrolli.it](mailto:info@elbocontrolli.it)

SPECIFICATIONS SUBJECT CHANGE WITHOUT PRIOR NOTICE

TOOL PRESETTER  
rock solid measurement







Interchangeable  
revolving spindle  
ISO, BT, HSK, .....

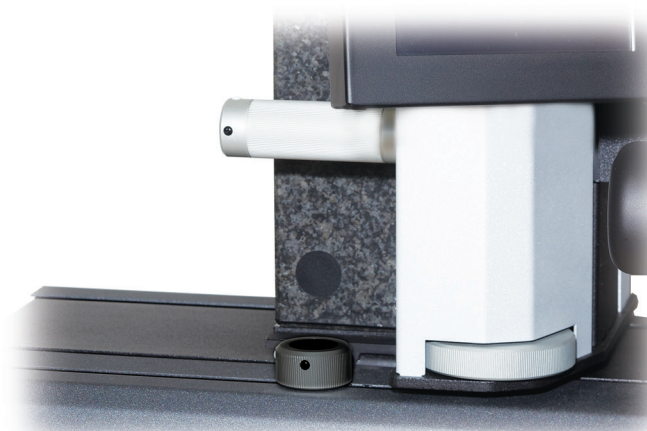
Concentricity accuracy:  
lower to 4  $\mu$ m



Spindle rotation brake  
is provided with an  
adjustable clutch



X axis movement  
- Rapid: with mechanical  
axis release  
- Micrometric: manual for  
high precision



Z axis movement  
- Rapid: with mechanical  
axis release  
- Micrometric: manual for  
high precision



## Cutting Edge Inspection

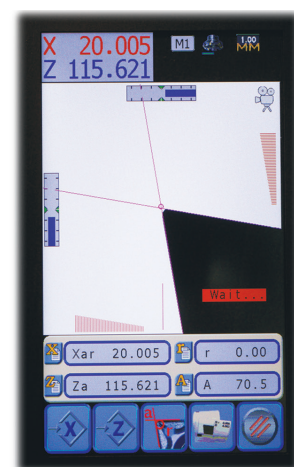
Particularly useful to check  
the tool cutting edge status.  
It's possible to detect damaged areas  
and/or wear of the cutting edge



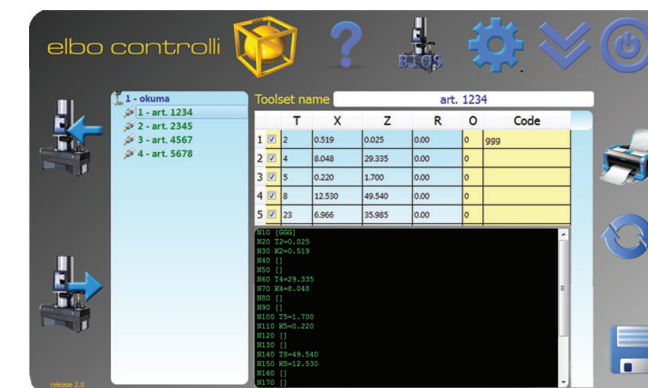
Tool profile collimation on fix  
reticule with X and Z axes analog  
comparators: axes control bars  
for the exact central position of  
the measure



Automatic cutting edge measure.  
After having found the central  
position by means of focus bars,  
on the axes counters the  
measurement is shown without  
additional operations



Autotargeting measurement:  
the viewed profile of the  
geometrical entities are  
automatically detected.  
The values of radii, angles, X  
and Z axes can be stored  
and/or printed on the label



## TD 346

The software allows to  
generate the tool corrector  
files in more than 50 CNC  
machine-specific formats

## ACCESSORIES



### Labels Printer

All the characteristic values of  
the tool are printed on the label



### Machine Stand

Very solid and ergonomic,  
makes the job easier.  
Three pots for the spindle-holders  
have been added on a lateral line.  
To avoid damage to the ground  
areas of the spindle-holders,  
a shock-absorbing material  
has been introduced

Dimensions: 730 x 800 x 500 mm  
Weight: 58 Kg